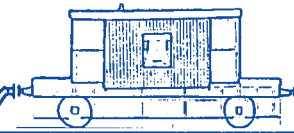




# TRACTION & ROLLING STOCK



No 145 April - May 2023

## ADVERTISER

[www.tractionads.co.uk](http://www.tractionads.co.uk)

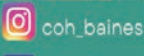
### RUBBER, SPONGE AND PLASTIC EXTRUSION SPECIALIST

For all your rubber sealing needs.

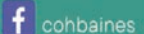
Sample matching and custom design service available



USE CODE TRACTIONAD510 AT CHECKOUT FOR 10% OFF YOUR FIRST ORDER



sales@coh-baines.co.uk 01892 543 311 [www.coh-baines.com](http://www.coh-baines.com)



- Vacuum Brake & Steam Hoses (B.S. & B.R. Standards)
- Rubber & Silicone Hoses & Connectors
- GRP Tube, Connectors & Fabrications
- Stainless Steel Fabricated Products



With an extensive range of standard products plus bespoke designs to meet your needs Halyard has the solution.

HOSE PRODUCTS CONTACT:

+44(0)2392 593979

GRP AND METAL PRODUCTS CONTACT:

+44(0)1722 710922

**Halyard**

[technical@halyard.eu.com](mailto:technical@halyard.eu.com)

### MUDFORDS LTD

PVC & CANVAS  
SHEETS, COVERS & CANOPIES  
MANUFACTURED TO SIZE

SUPPLIERS OF LOADSTRAPS & LIFTING SLINGS

Email: [sales@mudfords.co.uk](mailto:sales@mudfords.co.uk)

Tel: 0114 243 3033

Fax: 0114 244 4536

Website: [www.mudfords.co.uk](http://www.mudfords.co.uk)

## CRAFTMASTER RESTORATIONS

**Independent Heritage Engineering Services**

- Mechanical Assessments
- Machining & Fabrication
- Servicing & Maintenance

Over a decade's experience in road, rail, steam & heritage engineering

01954 591 033

[www.craftmasterrestorations.co.uk](http://www.craftmasterrestorations.co.uk)

[jamie@craftmasterrestorations.co.uk](mailto:jamie@craftmasterrestorations.co.uk)

## CRAFTMASTER PAINTS

**The UK's Leading Heritage Paint Supplier**

Supplying traditional Coach Enamel in authentic colours to preserved railways nationwide

Discounts available for railways and heritage groups - please contact us for further information

01954 231 308

[www.craftmasterpaints.co.uk](http://www.craftmasterpaints.co.uk)

[info@craftmasterpaints.co.uk](mailto:info@craftmasterpaints.co.uk)



**w.h.tildesley Ltd**

Drop Forging Specialist

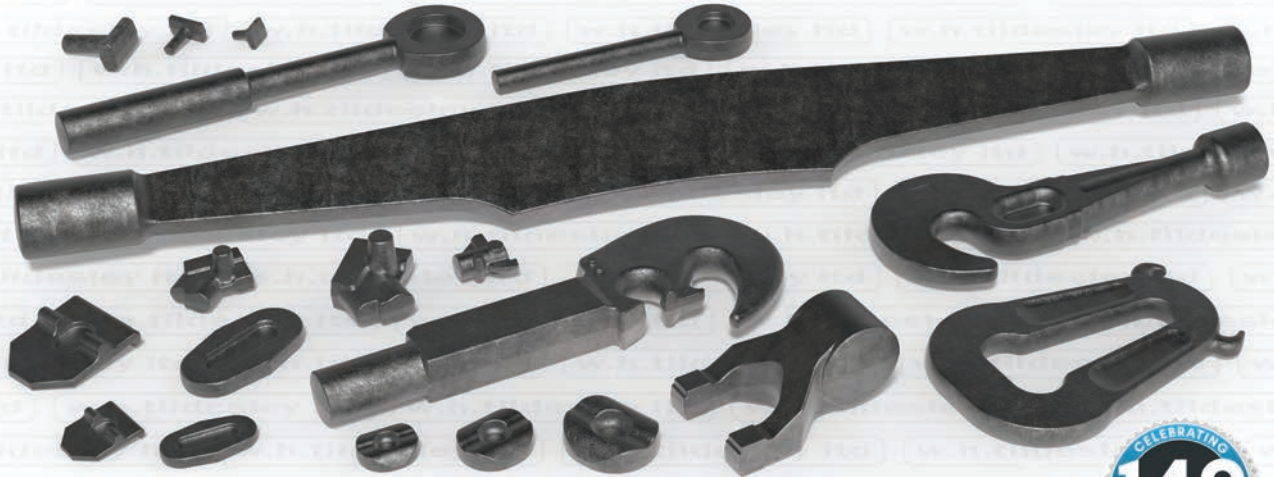
LRQA  
CERTIFIED  
ISO 9001

LRQA  
CERTIFIED  
AS 9100

LRQA  
CERTIFIED  
ISO 14001

# LOCOMOTIVE FORGINGS

► SPECIALIST MATERIALS ► COMPLEX FORGING SHAPES ► SMALL BATCHES A SPECIALITY



**ENGINEERING SOLUTIONS SINCE 1874**

CELEBRATING  
**149**  
YEARS

www.whitildesley.com | tel: +44 (0)1902 366440 | fax: +44 (0)1902 366216 | email: sales@whitildesley.com



## Contacts & Opening Hours

Sales Office: 01489 570737  
**Stuart Gray:** 07785 258169  
E-mail: sales@heritagesteamsupplies.co.uk

**Monday-Friday** 7:30am-4:30pm  
**Saturdays** 8am-12 Noon

\*Inc VAT & UK Mainland Only, Maximum Shipment Weight 30kg.



**IF IT'S IN STOCK**  
- NEXT DAY DELIVERY

Order by 3pm  
Mon-Fri  
not including weekends. Excludes  
circumstances out of our control.

**NO HIDDEN COSTS**

Applies to Online Orders only. Unless otherwise stated all prices exclude VAT | E & O.E.

## DISCOVER OUR FULL RANGE OF CONSUMABLES & WORKSHOP SUPPLIES



**FORKLIFT TRUCK SPILL KITS**  
The 'Forklift Truck' Spill Kit in Cylindrical Bag will absorb up to 20 Litres of liquid. The kit is designed to be attached to forklifts to provide a quick response in the event of an accident.

**Absorbs 20L**



**BLACK MAMBA DISPOSABLE GLOVES**

Strong wicking action

**Absorbs 17L**



**OIL & FUEL ABSORBENT PADS**

Perforated down centre for optimum flexibility

Sonic bonding for extra strength

**Absorbs 17L**



**EVO DRI MULTI-PURPOSE ABSORBENT GRANULES**

PRODUCT CODE: SPILL-OB100M/20PP  
**£14.46 +VAT**

**20L BAG**



**OCTOGRIP**

ENGINEERED FOR TACTILE GRIP & SUPERIOR EFFICIENCY, IDEAL FOR TASKS INVOLVING PRECISE HANDLING

NEXT GENERATION HIGH QUALITY GLOVES

AVAILABLE IN SIZES 8-10

**5 CATEGORIES AVAILABLE**  
COLD WEATHER  
HEAVY DUTY  
HIGH PERFORMANCE  
CUT SAFETY PRO  
WATERPROOF



**DRIP TRAYS**  
RIGID | FLEXIBLE | GRID

PRICES FROM **£9.00 +VAT**

Durable Recycled Plastic | Prevent Floor Contamination

**A Single Source Solution** - [www.heritagesteamsupplies.co.uk](http://www.heritagesteamsupplies.co.uk)



## The Vale of Berkeley Railway Trust Engineering Services



Help us build up our Engineering contract work!  
Our comprehensively equipped machine shop at our base at Sharpness is building a reputation for the quality work. One-offs a speciality. Staff some with aerospace engineering experience & international rail companies, General Milling & Turning (6 feet between centres /40in dia) Gear Cutting; Surface Grinding (up to 12in dia.)

Machine Shop Manager: **Graham Sturgess**  
[valeofberkeleyrailway@gmail.com](mailto:valeofberkeleyrailway@gmail.com)

## Tested Spring Co Ltd

Round, square & rectangular section springs for  
**Locomotives, Carriages and Wagons.**  
Suspension, Buffers, Valves, Piston glands & doors  
etc.call

Mark Woodward  
Phone **0121 557 2308**, Fax **0121 557 4031**  
Visit or leave an enquiry at  
[www.testedspring.com](http://www.testedspring.com)

## ALUMINIUM WINDOWS

**Kellett  
Engineering  
Company  
Limited**



*Jasper Street Works, Queens Road, Halifax HX1 4NT*



Since 1946 Kellett have been designing & producing a wide range of quality framed aluminium windows for trains, locos, and many other varieties of commercial, industrial vehicles and buildings.

Please contact us, see below for details :-

**[www.kellettwindows.co.uk](http://www.kellettwindows.co.uk)**

[sales@kellettwindows.co.uk](mailto:sales@kellettwindows.co.uk)

tel **01132 639041** or mobile **07445 425228**

Victoria Inman (Managing Director)

## 2 X Standard Gauge Carriages For Sale



Previously used as camping coaches and would make ideal Glamping, Offices, Shop, Holiday or Living accommodation. For details go to,

[sites.google.com/view/railway-coaches/home](https://sites.google.com/view/railway-coaches/home)

## CASTING SERVICES ENGINEERING Ltd

Cast iron, Steels, Bronzes, Gunmetal and Aluminium castings.  
Manifolds, Brake shoes, Axle bearings, Firegrates, etc.  
Restoration work, replacing worn or damaged parts.  
Little or no tooling costs. Castings in virtually any material.  
Full patternmaking, conventional & CNC machining facilities.  
Existing castings repaired. Welding or cold processes.  
We can help design or manufacture from sample or drawing.  
Urgent requirements with 24 hour turnaround possible.  
Give us a call to discuss your requirements, no job too small.  
**Casting Services, Mob 07722 277631. Fax 0116 2102647**  
**64 Highway Road, Thurmaston, Leicester, LE4 8FQ.**  
[casting.services@ntlworld.com](mailto:casting.services@ntlworld.com) [www.casting-service.co.uk](http://www.casting-service.co.uk)



- MATERIAL HANDLING
- ROLLING STOCK STORAGE & MAINTENANCE
- BATTERY SHUNTER HIRE
- TRAINING
- FABRICATION & WELDING
- RAIL WAGON CLEANING
- CET AND FUELLING
- SHOT BLASTING AND PAINTING

Contact details  
[mark@mclrail.co.uk](mailto:mark@mclrail.co.uk)  
[www.mclrail.co.uk](http://www.mclrail.co.uk)  
Tel: 020 3280 6390



## Refractories & High Temperature Insulation Materials



- Premium IP Luting Compound for sealing white metal bearings.
- Fire Bricks and Refractory Castables for the brick arch.
- Ceramic Fibre Insulation for boilers.



Bristol  
**0117 9117895**  
[www.vitcas.com](http://www.vitcas.com)



## Epping Ongar railway - MK2 BSO 9410



This coach was in use for the 2022 season and has recently been withdrawn from traffic. Vacuum braked with working steam heat and ETH. Tyres were turned in 2016 and are now on minimum thickness.

All doors on one side have been replaced with new fibreglass shells.

**MK1 RBR 1699**, Vehicle is complete but un-restored .

**Taylor & Hubbard 5ton crane and Match wagon.**

In un-restored condition and will be scrapped if not sold.

Enquires please, [michaeld@eorailway.co.uk](mailto:michaeld@eorailway.co.uk).





## RUSHMERE ENGINEERING

Thousands of **hot** forged rivets in various sizes made on site now available for next day delivery (if ordered before 1pm)

Please get in touch  
call **07554 435961** or

[info@rushmereengineering.co.uk](mailto:info@rushmereengineering.co.uk)



## TREFOIL STEEL Co Ltd

TINSLEY SHEFFIELD S9 1QQ

Ph 01709 830701 Fx 01709 830737

e-mail [info@trefoilsteel.com](mailto:info@trefoilsteel.com)

**SUPPLIERS TO THE RAILWAY INDUSTRY**

Patterns, Castings and Machining Supplied.

In small to medium batch quantities.

[www.trefoilsteel.com](http://www.trefoilsteel.com)



## Railway Wheelset & Brake Ltd

Suppliers of Railway Axles, Wheels, Tyres  
& Heritage Rail Components

### Introducing our expanding range of carriage and wagon components



Overhaul kits for all sizes  
of Vacuum Cylinder &  
Associated Valves



Vacuum Brake Hose  
To any required size



Huge selection of Vacuum  
Cylinder components



Steam Heat  
components



Vacuum Brake  
components

### Bespoke Items

- Complete Vacuum Cylinders
- Passenger Communication Valves
- Dummy Couplings
- Guard's Brake Valves
- Release Valves
- and many more.

### Brake Blocks & Air Brake Components

We are also suppliers of a variety of Brake Block  
types and UIC Air Brake Components.



### Contact

Don't forget to check out our catalogue on our website!

[sales@railwaywheelset.co.uk](mailto:sales@railwaywheelset.co.uk) - 0114 303 0705 - [www.railwaywheelset.co.uk](http://www.railwaywheelset.co.uk)



### AD Castings Ltd

Specialising in various grades of  
bronze, aluminium and brass.  
Pattern making services available with  
a very quick and efficient turn around.

**Bronze castings suppliers to Flying Scotsman**

Wellington Mill, Bolton Rd, Blackburn  
BB2 3PZ **01254 59577**

[www.adcastings.co.uk](http://www.adcastings.co.uk)



### Traction & Rolling Stock Advertiser

Sent out FREE to Heritage Railways, Industrial Railways,  
Tram & Metros Systems also most Main Line Railways in  
the UK and their contractors or agents. Produced every  
two months, as a trade directory going to Managers,  
Engineers and other decision makers in a handy size  
Details advertised in this publication have been supplied  
by the advertisers and we cannot guarantee the details  
or the ownership of any vehicles or parts advertised.



### Whistle Blowing

At Aspect Rail we call this confidential  
reporting and we have been providing this service  
across our companies since 2004  
The Heritage Railway Association (HRA), among others,  
are advising their members in their revised code of  
conduct to have a confidential "whistle blowing"  
procedure for all of its member's staff.  
We would be delighted to discuss your requirements and  
provide you with a cost for our annual contract to provide  
the whistle blowing service.

Please contact us at [info@aspectsolutions.org.uk](mailto:info@aspectsolutions.org.uk)

All adverts go onto our site [www.tractionads.co.uk](http://www.tractionads.co.uk)

Editor, Ray King. Phone 07768 857189

[rayking@tractionads.com](mailto:rayking@tractionads.com)

Closing date for the next issue 25th May 2023

**Free 3cm rail vehicle adverts for heritage railways**



# WE'RE THE NARROW-GAUGE EXPERTS

ESTABLISHED OVER

**50**  
YEARS

**Our unrivalled expertise, service & back-up is why our customers have trusted us for over 50 years.**

From the latest battery & diesel technology new build locomotives & carriages, to historic restoration projects; we also offer maintenance & spares plus on-site services including surveying, design & track laying.

Whatever your narrow-gauge project, talk to us for the friendliest expert advice, service and uncompromising back-up.



**Alan Keef Ltd**

**Call - 01989 750757**

**Email - [sales@alankeef.co.uk](mailto:sales@alankeef.co.uk)**

**Or visit [www.alankeef.co.uk](http://www.alankeef.co.uk)**



Toddington Narrow Gauge Railway has for sale an ex RNAD Trecwn bogie carriage built by Robert Hudson Ltd in the 1980s, re-gauged to two foot by Alan Keef Ltd, now surplus to requirements. In running order with seats for 6 to 8 passengers plus guard.

Air brakes fitted with doors, windows, internal handbrake, couplers all intact and steel bodywork in good condition. Inspection by prior arrangement. Offers based on £10000 + VAT to North Gloucestershire Railway Co. Ltd, email [ngrtodd@gmail.com](mailto:ngrtodd@gmail.com)

## HERITAGE MOTION CORKS

Vented & non-vented many sizes catered for. Please call for details, Tristan 07765 666444 UK made. [tristanbishopsmith@gmail.com](mailto:tristanbishopsmith@gmail.com)

## For Sale 'The Clacton Express'

This is a complete 3 car 309 EMU to be sold as a whole or separate coaches. For more information, photos and video please visit the CEPG website [www.clactonexpresspreservationgroup.com/clacton-express](http://www.clactonexpresspreservationgroup.com/clacton-express) Or email Andy (the owner) to discuss offers email;

[tutoronascooteruk@gmail.com](mailto:tutoronascooteruk@gmail.com)



## Only LeeSan truly specialise in toilets

**Toilets, Tanks, Hoses, Clips, Gauges, Deck Fittings, Vent Filters and everything you need plus Advice & Guidance**

**Providing the best seat on-board ....**



[sales@leesan.com](mailto:sales@leesan.com)  
T: 01295 770000



## Specialising in Copper and Steel boiler repairs

Our skills have been built up over the years and all of our certifications to standards. We hold Welding Codes and a set of Welding procedures for **Copper & Carbon Steel**, approved by **British Engineering Services & Lloyds** in accordance with BS EN ISO standards. Whether you need a quick repair of detailed modification we are available on site or mobile 7 days a week. We take great pride in our work and provide X-Ray quality welding. Our heritage and industrial boiler welding



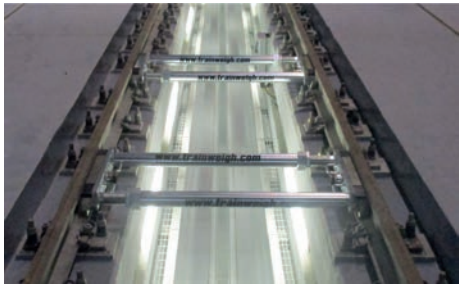
repairs are carried out to the highest standards of coded welding. We can supply a certificate plate and specialise in flanged and welded fire boxes. For more details of our work and abilities please check out our web site.

**PWS Weld Ltd,**  
**07724 600364 01246 475527**  
**[www.weldingpro.co.uk](http://www.weldingpro.co.uk)**



# TRAINWEIGH

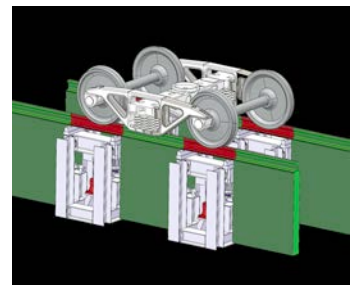
## RAIL WEIGHING SOLUTIONS



Portable Static Weighing



In-Rail Dynamic Weighing



Delta Q Testing

**Tel: +44 114 321 63 64**

**Email: [trainweigh@weighbridgeservices.com](mailto:trainweigh@weighbridgeservices.com)**

**Web: [www.trainweigh.com](http://www.trainweigh.com)**

BREL railbus RB3 Irish gauge, details at  
<https://tinyurl.com/2p96c2wj> info@downrail.co.uk

### **Heritage Transport Supplies Ltd**

**01509 219725 or 07798 916115.**

**E mail – [martynhts@btinternet.com](mailto:martynhts@btinternet.com)**

#### **SAFETY MANAGEMENT SYSTEMS**

I can advise on, prepare or audit Safety Management Systems (SMS) and Competency Management Systems (CMS). I specialise on the training and assessing of Safety Critical (SC) staff. I have an extensive portfolio of this type of work and I now cover a wide range of heritage railways, standard and narrow gauge, plus some commercial railway operations and new build loco projects. Please call to discuss your specific requirements.

#### **For sale – standard gauge**

**Mark 2A BFK** carriage on Mk1 bogies, dual heated, air braked

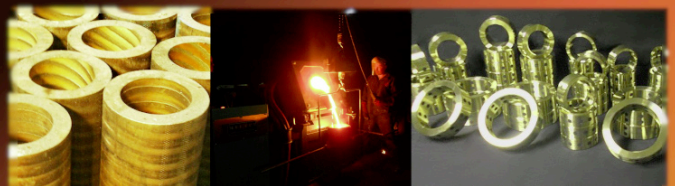
**Mark One** cinema coach 1012 on Mark one bogies, steam heat, vacuum braked. Body work very poor. Probably the oldest Mk1 carriage in existence.

**Bagnall 0-4-0** saddle tank locomotive 2565. This loco is new on to the market. It can be viewed by appointment only. It is complete and in good order with vacuum brakes fitted. It last ran in Dec 2021 and now needs a ten year boiler overhaul.  
**New GWR/BR loco Steam whistles** – large and small type – will sell singly.

**18in gauge** lightweight loco, Petter engine.  
**2ft mock GER coach**, in need of restoration.  
 Set of 3 (good air braked) **10.25 coaches**  
 More details check out on  
[www.tractionads.co.uk/vehicles](http://www.tractionads.co.uk/vehicles)



*Supplying the Locomotive Industry*



We are a family run foundry producing high quality, competitively priced castings since 1982 in Gunmetal, Cast Iron, Phosphor & Aluminium bronzes, Brass, Copper and Aluminium grades. We specialize in bar, tube, square, hexagon and flat



Call us on:- **01902 636674**

E-Mail us at:- [sales@abbeyspuncast.co.uk](mailto:sales@abbeyspuncast.co.uk)

Visit our website:- [www.abbeyspuncast.co.uk](http://www.abbeyspuncast.co.uk)







**17D**  
Precision Engineering :: CNC Machining

One offs, small batches, or quantity  
Call us to discuss your requirements

---

**17d-engineering.co.uk 01629 825070**

Parts Made or Refurbished  
One-offs or Batches  
Turning, Boring, Milling, Grinding etc.  
Tool, Cutter & Drill Sharpening

**John Dunn Engineering**  
Precision Engineers

01430 - 424957  
theworks@johndunnengineering.co.uk  
www.johndunnengineering.co.uk




**TRENT INSTRUMENTS**

European Agents & Distributors of Locomotive Horns from  
**AIRCHIE**  
Sales-Overhaul-Maintenance  
Pressure gauges, Horn control & Check valves,  
Horns & Whistles  
Units 8-9, Genesis Business Park, Midland Way, Nottingham, NG7 3EF  
Tel 0115 978 5333 Fax 0871 750 2387  
Sales@trentinstruments.co.uk  
**www.trentinstruments.co.uk**

**Steam Locomotive Boilers**  
Annual statutory boiler inspections undertaken  
New boilers designed & approval obtained

**Diesel Locomotive Air Reservoirs**  
In situ inspection of all types of reservoir

**Engineering Design**  
Rolling stock and equipment.

**Graham Morris** BSc, CEng, MIMechE  
01327 872148, graham@gmel.co.uk  
**Graham Morris Engineering Ltd**



**Bressingham Steam Museum 35lbs Rail**  
We have for disposal an amount of used ex Trecwn 35lbs rail, in different short lengths. Details or to view,

Diss **01379 686900** or **info@bressingham.co.uk**



**SEVERN LAMB**

The Visitor Transportation & Engineering Specialists

Heritage Style Coaches and  
Period Locomotives

Custom Designs Built To  
Client Specifications

Refurbishments and  
Renovations

Maintenance and  
Servicing




**No 130**

E: sales@severn-lamb.com  
W: www.severn-lamb.com  
T: +44(0) 1789 400 140

*Established in 1947  
Enjoyed by Generations*

**3E® Bonut Engineering Ltd**

Unit 12, Latham Close  
Bredbury Industrial Park, Stockport  
SK6 2SD UNITED KINGDOM

**Tel: +44 (0)161 430 4000** Fax: +44 (0)161 494 1461  
www.bonut.co.uk - Email: sales@bonut.co.uk

### DEREVE® Fusible Plugs

#### The Original "National" Design

Designed to protect internally fired steam boilers.  
Gunmetal body construction  
Centre plug held in place by fusible low melting point alloy. Fig 5, Fig 8 and 9 Fusible Plugs



### Gib Head Keys

Metric to BS 4235 Part 1:1972, DIN 6884, DIN 6885, and Imperial to BS 46 Part 1:1958  
Key Steel (EN8) & Stainless Steel grades including Duplex & Ferralium available alongside other alloys



### Shaft Collars

Available as solid or single/double split (clamp type)  
Metric and Imperial to BS 4185 Part 1 1967  
Standard material BS 230M07 (EN1A), plated steel, and stainless available



### Engineer Studs

Wide range and made to customer's own specification  
Imperial studs to BS1083 and BS2693 & Metric studs are made to BS4439  
Wide choice of materials available, standard in EN1A





**MAXIM**  
POWER TOOLS SCOTLAND LTD

E: Sales@maximpower.co.uk  
T: 0141 552 5591  
40 Couper Street, Glasgow, G4 0DL

**MASTER 35®**

Impact Sockets

Auger Bits

Impact Wrench

Pins, Rings & Maxim Clips

No Go Gauge



## WANTED

Private enthusiast looking to acquire the following for preservation on a private siding;  
0-4-0DH or DE Shunter, Double Ended Veranda Style Brake Van, Wooden Cattle Wagon, Wooden Coal Wagon, Fuel/Oil Tanker, all circa 1950's/60's, any condition considered.  
Contact Steve on 07780 330600 or  
stephen.dunn60@icloud.com

**SAWFORD**

SAWFORD ENGINEERING LIMITED  
PRIORS HAW ROAD  
WELDON NORTH IND. EST  
CORBY  
NORTHANTS  
NN17 5JG

TEL: (01536) 263211  
FAX: (01536) 406266  
E-MAIL: sales@sawfordengineering.co.uk  
www.sawfordengineering.co.uk

sales@sawfordengineering.co.uk  
www.sawfordengineering.co.uk

THE TOTAL ENGINEERING SOLUTION FOR INDUSTRY

We offer design, repair and overhaul of components including reverse engineering, manufacture from drawings & machining of your own components. Facilities include multi-axis machining utilising both conventional and CNC equipment.

## STEAM ENGINE TUBES Ltd

*Manufacturing bespoke steam parts since 1986*



Steam engine tube & boiler component manufacture. Super flues tubes, smoke tubes, hot formed large head rivets & LG4 wash out plugs from our factory near Bridgenorth. Check our web site.

[www.steamenginetubes.co.uk](http://www.steamenginetubes.co.uk)

Dave on 07760 289467

## Higham's Heritage Engineering

We are a family-run business, specialising in Heritage Engineering;

We offer a range of services to suit the requirements of Heritage Railways and Traction Engine Owners.

Our services are;

- \*Fitness to run exams
  - \*Boiler/Air receiver inspections in line PSSR 2000
  - \*Locomotive Repair/maintenance,
  - \*Carriage repairs/maintenance,
  - \*Covering Steam or Diesel at competitive rates
- for information contact Matthew Higham



## FOR SALE

Email: [marcus.mayers@rasic.co.uk](mailto:marcus.mayers@rasic.co.uk)

Phone: 07747771894



- Brighton Belle Pullman Carriage



- LU 1938 Stock Carriage



- BR Mk2 SK - Ex BR Research



- B4/B5 Newly Profiled Wheelset



- B4 Bogies

Open to offers.  
Please call: 07747771894 or email:  
[marcus.mayers@rasic.co.uk](mailto:marcus.mayers@rasic.co.uk) for  
more info or to arrange viewings.

Take a look at our website: <https://tsolondon.uk>